

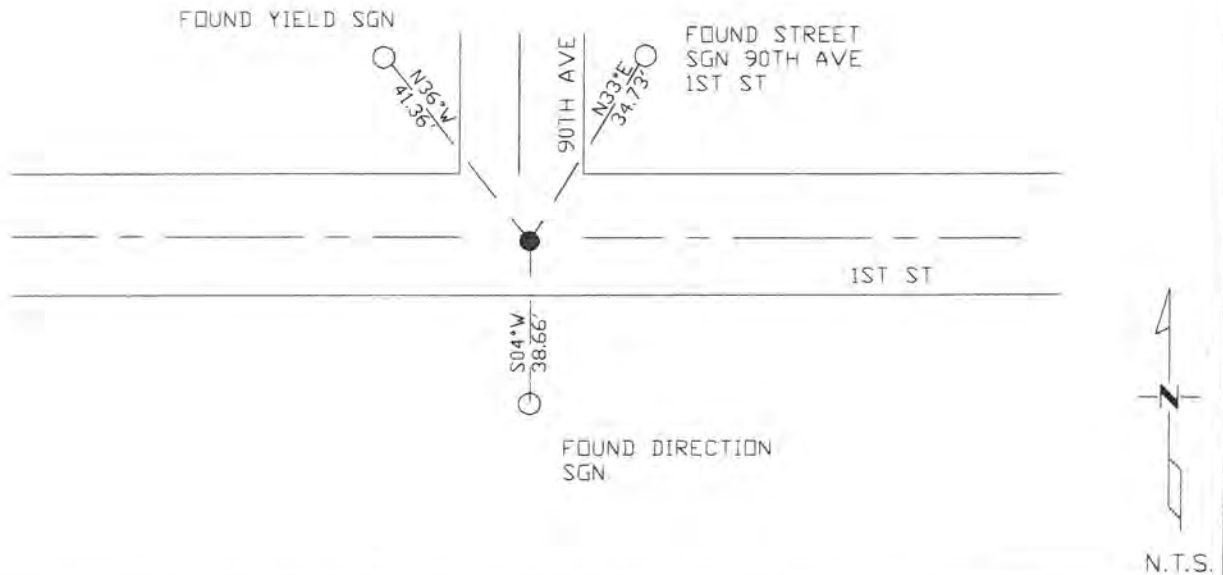
# CERTIFICATE OF LOCATION OF GOVERNMENT CORNER

SOUTHWEST Corner of Section 34, Township 105N, Range 42W  
 5th Principal Meridian, State of Minnesota, County of Murray.

At the corner location shown on the sketch:

- On \_\_\_\_\_ found a \_\_\_\_\_  
DATE
- left monument as found       lowered monument       removed monument (explain)
- On 06/10/19 placed a Set a NO. 4 rebar capped LS 49563 using 3 found ties from 2006  
DATE  
corner record.

### SKETCH OF REFERENCE TIES



Statement of evidence for this corner location is on back of this page.

I hereby certify that this document was researched and prepared by me or under my direct supervision and that I am a licensed Land Surveyor under the laws of the State of Minnesota.

Signature *[Handwritten Signature]*  
 Date 6/27/19 License No. 49563  
 Title:  
 Land Surveyor       Professional Engineer  
 County Surveyor       County Engineer

OFFICE OF THE COUNTY RECORDER

County of Murray

I hereby certify that this document was filed in the Co. Recorder's office at 9:00 A.M. on the 8<sup>th</sup> day of July A.D. 2019

County Recorder *[Handwritten Signature: Evelyn Larson]*

by \_\_\_\_\_, Deputy

DOCUMENT NO. \_\_\_\_\_

Statement of Evidence:

Southwest corner of Section 34, Township 105 North, Range 42 West, 5th Principal Meridian, Murray County, Minnesota.

1858 - W.J. Niely, US. Deputy Surveyor, monumented south township line.

1976 - Murray County Highway Department, found a concrete stone. Set the following ties:

R.P. Tack in Cor. fence post NE 50.4'

R.P. Tack in sign post NW 38.3'

2006 - Ulteig Engineers found nothing and set a  $\frac{5}{8}$ " rebar capped 44563 on the centerline intersection, set ties and filed a Certificate of Location (no document number)

2012 - Murray County Highway Department, found a Land Surveyor's pin with cap #44563, 3" down. Coordinates provided.

2019 - Westwood Professional Services searched area and found 3 ties from the 2006 corner record but no monument. Set a No. 4 rebar capped LS 49563 using the 3 found ties and confirmed location with coordinates provided.